

ADC AD-758V

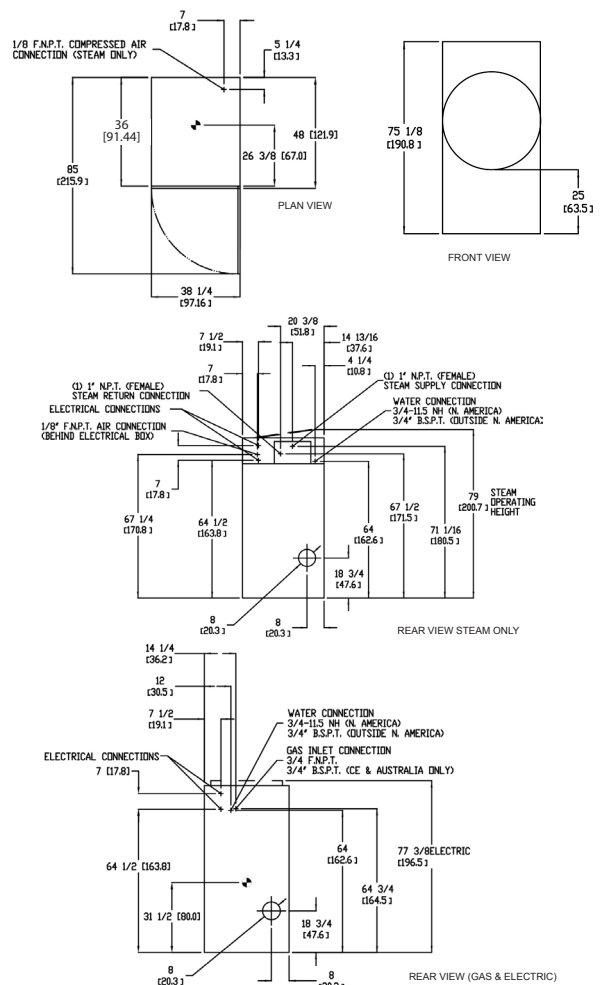
AD-120 Specifications				
Tumbler Capacity (Dry Weight)	75 lbs. (34.02 kg)			
Tumbler Diameter	36-1/4" (92.08 cm)			
Tumbler Depth	36" (91.44 cm)			
Tumbler Volume	21.50 cu ft (608.81 L)			
Tumbler/Drive Motor	1 hp / 1/2 hp (0.75kW/0.37 kW)*			
Blower/Fan Motor	~1 hp* (~0.75 kW)			
Door Opening (Diameter)	31-3/8" (79.69 cm)			
Door Sill Height	28" (71.12 cm)			
S.A.F.E. Water Connection	North America	3/4"-11.5 NH (North America)		
	Outside North America	3/4" B.S.P.T. (Outside North America)		
Dryers per 20'/40' Container	9 / 20			
Dryers per 48'/53' Truck	24 / 26			
Gas	Voltage Available	120-575V 1, 3ø 2, 3, 4w 50/60 Hz		
	Approximate Net Weight	721 lb (327.04 kg)		
	Approximate Shipping Weight	773 lb (350.63 kg)		
	Airflow	60 Hz	1,000 cfm (28.32 cmm)	
		50 Hz	833 cfm (23.60 cmm)	
	Heat Input	175,000 Btu/hr (44,099 kcal/hr)		
	Exhaust Connection (Diameter)	8" (20.32 cm)		
	Compressed Air Connection	N / A		
	Compressed Air Volume	N / A		
	Inlet Pipe Connection	3/4" F.N.P.T.		
	3/4" F.B.S.P.T. (CE and Australia Only)			
Electric	Voltage Available	208-575V 1, 3ø 2, 3, 4w 50/60 Hz		
	Approximate Net Weight	721 lb (327.04 kg)		
	Approximate Shipping Weight	773 lb (350.63 kg)		
	Airflow	60 Hz	1,000 cfm (28.32 cmm)	
		50 Hz	833 cfm (23.60 cmm)	
	Exhaust Connection (Diameter)	8" (20.32 cm)		
	Compressed Air Connection	N / A		
	Compressed Air Volume	N / A		
	Oven Size			
	kW	Btu/hr	kcal/hr	
30	102,400	25,800		
Steam	Voltage Available	120-575V 1, 3ø 2, 3, 4w 50/60 Hz		
	Approximate Net Weight	816 lb (370.13 kg)		
	Approximate Shipping Weight	868 lb (393.72 kg)		
	Airflow	60 Hz	1,200 cfm (33.98 cmm)	
		50 Hz	1,000 cfm (28.32 cmm)	
	Steam Consumption	275 lb/hr (124.7 kg/hr)		
	Operating Steam Pressure	125 psi max (8.62 bar, 862 kPa)		
	Exhaust Connection (Diameter)	8" (20.32 cm)		
	Compressed Air Connection**	1/8" F.N.P.T.		
	Compressed Air Volume **	0.75 cfm (0.02 cmh)		
Boiler HP (Normal Load)	7.2 Bhp			
Standard Supply Connections †	(1) 1-1/4" N.P.T.			
Standard Return Connections †	(1) 1" N.P.T.			

Electrical Service Specifications					
SERVICE VOLTAGE	PHASE	WIRE SERVICE	APPROX AMP DRAW		CIRCUIT BREAKER
			60 Hz	50 Hz	
GAS & STEAM					
120	1ø	2	13.0	--	20 --
208	1ø	2	7.6	--	15 --
220	1ø	2	7.3	8.6	15 15
230	1ø	2	--	8.0	-- 15
240	1ø	2	7.0	8.0	15 15
GAS & STEAM					
208	3ø	3	4.7	--	15 --
220	3ø	3	4.8	4.8	15 15
230	3ø	3	--	4.7	-- 15
240	3ø	3	4.9	5.4	15 15
380	3ø	4 or 3	2.9	3.1	15 15
400	3ø	4 or 3	--	3.2	15 15
416	3ø	4 or 3	--	3.1	15 15
440	3ø	4*	2.6	--	15 --
460	3ø	3	2.8	--	15 --
480	3ø	3	2.8	--	15 --

Electrical Service Specifications						
SERVICE VOLTAGE	PHASE	WIRE SERVICE	Hz	kW	APPROX AMP DRAW	
					CIRCUIT BREAKER	
Single Phase Heat Single Phase Motor						
208	1ø	2		60 24 123 175		
				60 30 152 200		
220	1ø	2		60 20 98 125		
				60 26 125 175		
				50 20 100 50		
				50 26 127 175		
				50 22 97 125		
230	1ø	2		60 28 123 175		
				50 22 104 150		
				50 28 130 175		
				60 24 107 150		
				60 30 132 175		
240	1ø	2		60 24 108 150		
				50 24 108 150		
				50 30 133 175		

Electrical Service Specifications						
SERVICE VOLTAGE	PHASE	WIRE SERVICE	Hz	kW	APPROX AMP DRAW	
					CIRCUIT BREAKER	
Three Phase Heat Single Phase Motor						
208	3ø	3		60 24 74 100		
				60 30 91 125		
				60 20 60 80		
220	3ø	3		60 30 86 25		
				60 26 76 100		
				50 20 61 80		
				50 26 77 100		
				60 22 56 80		
230	3ø	3		60 28 71 100		
				50 22 63 80		
				50 28 78 100		
				60 24 65 90		
				60 30 79 100		
240	3ø	3		50 24 66 90		
				50 30 80 125		
				50 20 39 50		
380	3ø	4		50 26 48 70		
				4 50 22 40 60		
400	3ø	4		4 50 28 48 70		
				60 30 49 70		
416	3ø	4		50 24 41 60		
				50 30 50 70		

Electrical Service Specifications						
SERVICE VOLTAGE	PHASE	WIRE SERVICE	Hz	kW	APPROX AMP DRAW	
					CIRCUIT BREAKER	
Three Phase Heat Three Phase Motor						
208	3ø	3		60 24 71 90		
				60 30 88 125		
				60 20 57 80		
220	3ø	3		60 26 73 100		
				50 20 57 80		
				50 26 73 100		
				60 22 0 0		
				60 28 0 0		
230	3ø	3		50 22 60 80		
				50 28 75 100		
				60 24 63 80		
				60 30 77 100		
				50 24 63 80		
240	3ø	3		50 30 78 100		
				60 20 33 50		
				60 26 42 60		
				50 20 33 50		
				50 26 43 60		
380	3ø	3		50 22 35 50		
				50 28 44 60		
400	3ø	4 or 3		50 24 36 50		
				50 30 45 60		
416	3ø	4 or 3		60 20 29 40		
				60 26 37 50		
				50 26 37 50		
440	3ø	3		60 22 30 40		
				60 28 38 50		
460	3ø	3		60 24 32 50		
				60 30 39 50		
480	3ø	3		60 24 0 0		
				60 30 0 0		
575	3ø	3		60 30 0 0		
				60 30 0 0		



Specifications in parentheses are metric equivalents.
 * Reversing Dryers use 3-phase (3ø) motors.
 ** Air-operated steam damper system requires a clean, dry, and regulated 80 psi +/- 10 psi (5.51 bar +/- 0.69 bar) air supply.

9/23/16

